

1 2 3 4 5 6 7 8

REV	LOCATIONS	DESCRIPTION	DATE	REVISER	APPD
1	△	Size 15.6±0.15 Change to 16.6±0.15	20240604	CHERRY	LEO

**SPECIFICATIONS**

**Material and Plating**

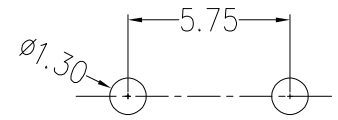
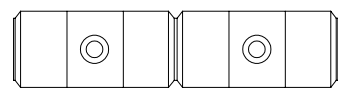
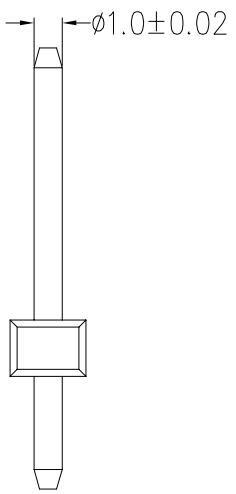
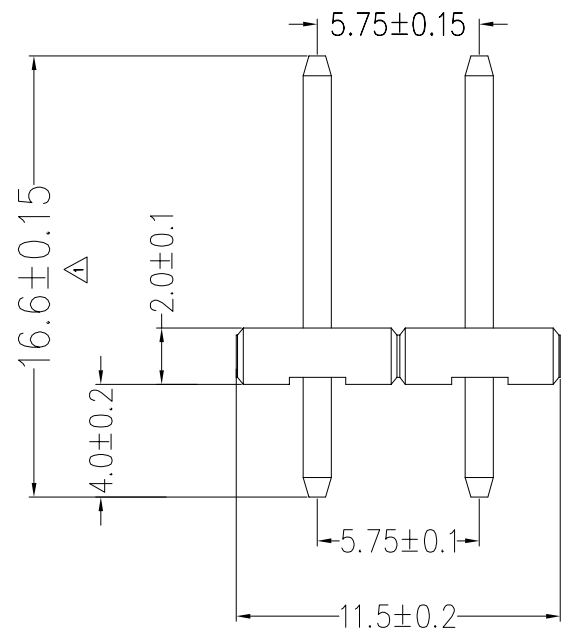
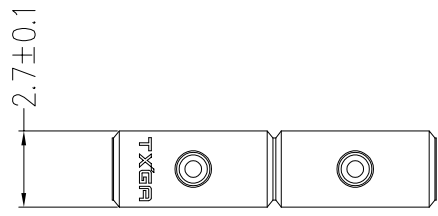
Housing: PA6T, 94V-0, ROHS2.0  
 Contact Pin, Brass, Tin Plated

**Electrical**

Current Rating : 10A AC(rms)/DC  
 Voltage Rating : 300V AC(rms)/DC  
 Contact Resistance: 30mΩ Max.  
 Dielectric Withstanding Voltage: 1.6KV AC r.m.s  
 Temperature Range-Operating: -40°C~+105°C

A  
B  
C  
D  
E  
F

A  
B  
C  
D  
E  
F



Recommended P.C.Board Layout  
 General Tolerances ±0.05

<p>THIRD ANGLE PROJECTION</p>	GENERAL TOLERANCES (UNLESS SPECIFIED)		APPROVE BY	DATE	PART NO.	ITEM NO.	<p>Building Technology Cornerstone</p>	
	X. ±0.30	X.* ±5*	LEO	30/JUN/23	FPH57501-S02BK001-00	FPH57501		
	DESIGN UNITS METRIC	X.X ±0.20	X.X* ±2*	CHECKED BY	DATE	TITLE		REV 1      SHEET NO. 1/1
	SCALE 5:1      SIZE A4	X.XX ±0.15	X.XX* ±1*	GISELLE	30/JUN/23	Pin Header		
	X.XXX ±0.10	X.XXX* ±0.5*	DRAWN BY	DATE	THIS DRAWING CONTAINS INFORMATION THAT IS PROPRIETARY TO TXGA INDUSTRIAL ELECTRONICS(S.Z)CO.,LTD AND SHOULD NOT BE USED WITHOUT WRITTEN PERMISSION			
			CHERRY	30/JUN/23				

1 2 3 4 5 6 7 8